

balma

Wzornik  
tkanin

---

Upholstery  
sample book

---

2024

---

**Extended**

Grupa / group	Tkanina / fabric	Standard
<b>O</b>	Lars	75 · 45 · 59 · 79 · 27 · 07 · 81 · 88 · 90 · 98 · 99
	Sawana	84 · 80 · 34 · 27 · 21 · 96
	Terra	1 · 2 · 4 · 5 · 7 · 10 · 11 · 12 · 14
<b>A</b>	Cura	60000 · 60110 · 61168 · 60019 · 62082 · 64196 · 64252 · 66170 · 68264
	Era	24 · 09 · 36 · 35 · 28 · 27 · 15 · 01 · 02 · 46 · 13 · 14
	Medley	61189 · 61002 · 62054 · 63063 · 66010 · 67006 · 60003 · 60167 · 60004 · 60999
	Next	10 · 14 · 16 · 15
<b>B</b>	Agava	Ivory 126 · Calico 100 · Biscuit 117 · Icicle 149 · Pewter 104 · Grey 850 · Burgundy 135 · Indigo 700 · Rust 250 · Terracota 115 · Mist 145
	Main Line Flax	20 · 63 · 32 · 13 · 08 · 03 · 46 · 14 · 17 · 49 · 22 · 24 · 16 · 28
	Stamskin	10120 · 20161 · 07445 · 00002
<b>C</b>	Blazer	CUZ 58 · CUZ 2W · CUZ 82 · CUZ 2Q · CUZ 33 · CUZ 1W · CUZ 90 · CUZ 28 · CUZ1J · CUZ30

## Extended

---

Wykończenia z oferty rozszerzonej (z pełnej karty tkanin producenta) wymagają potwierdzenia dostępności i mogą wiązać się z dłuższym terminem realizacji. Szczegółowe informacje o wykończeniach dostępnych w ramach konkretnych produktów znajdują się na stronie [balma.pl](http://balma.pl).

/

Finishes from the extended offer (from the manufacturer's full fabric chart) require confirmation of availability and may involve longer lead times. For detailed information on finishes availability of specific products, please visit [balma.eu](http://balma.eu).

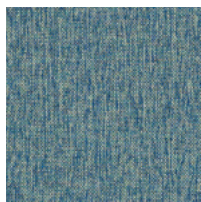
/

Ausführungen aus dem erweiterten Angebot (aus der vollständigen Stofftabelle des Herstellers) erfordern eine Bestätigung der Verfügbarkeit und können längere Lieferzeiten mit sich bringen. Bitte besuchen Sie [balma.de](http://balma.de), um Einzelheiten zu den verfügbaren Ausführungen für bestimmte Produkte zu erfahren.

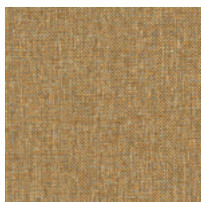
# Lars

Standard

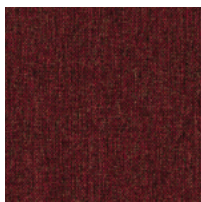
grupa / group 0



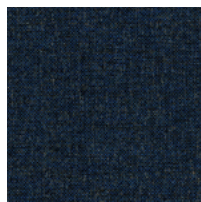
75



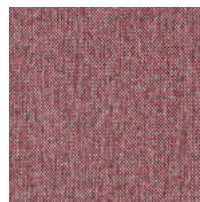
45



59



79



27



07



81



88



90



98



99

## Skład / Composition

100% Poliester / Polyester

## Gramatura / Weight

240 g/m<sup>2</sup> +/-5%

## Wytrzymałość na rozciąganie / Tensile Strength

900-988 N WARP, 728-804 N WEFT (EN ISO 13934-1:2013)

## Ścieralność / Abrasion Resistance

80000-90000 (EN ISO 12947-1:2007; EN ISO12947-2:2017)

## Wytrzymałość na rozdarcie / Tear growth resistance

101-112 N WARP, 79-89 N WEFT (EN ISO 13937-3:2002)

## Odporność na światło / Light Fastness

4 (EN ISO 105; B02:2014-11)

## Odporność na tarcie / Fastness to rubbing

sucho / dry: 4-5, mokro / wet: 4-5 (EN ISO 105-X12:2016)

## Pilling / Pilling

4 (EN ISO 12945-2:2021; 2000cycles)

## Trudnopalność / Flammability

EN1021 -1 BS5852: Part 1:1979 Ignition source 0 (Cigarette)  
CAL TB 117

## Czynniki środowiskowe / Environment

OEKO-TEX® STANDARD 100  
REACH COMPLIANCE



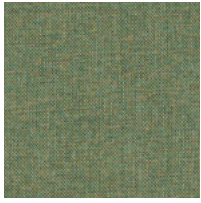


# Lars

Extended

grupa / group 0

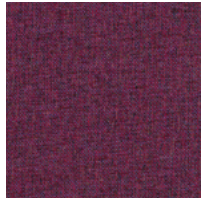
---



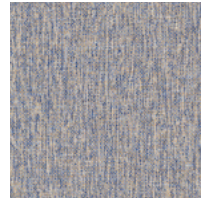
35



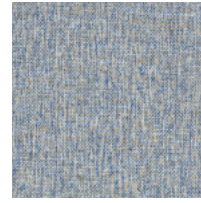
62



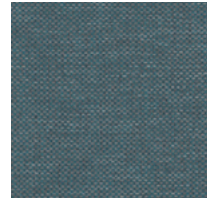
68



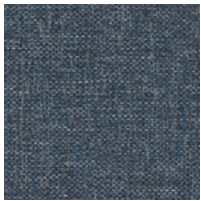
73



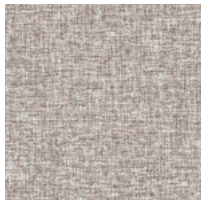
74



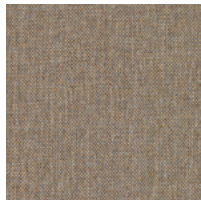
76



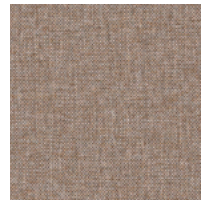
77



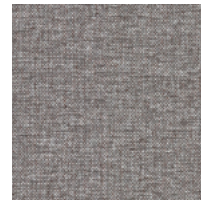
82



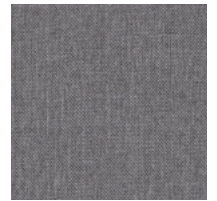
87



89



92



93



96



97



100

# Sawana

Standard

grupa / group 0



84



80



34



27



21



96

## Skład / Composition

100% Poliester / Polyester

## Gramatura / Weight

245 g/m<sup>2</sup> +/-5%

## Wytrzymałość na rozciąganie / Tensile Strength

1186-1310 N WARP, 1258-1390 N WEFT (EN ISO 13934-1:2013)

## Ścieralność / Abrasion Resistance

90 000-100 000 (EN ISO 12947-1:2007; EN ISO 12947-2:2017)

## Wytrzymałość na rozdarcie / Tear growth resistance

82-91 N WARP, 82-91 N WEFT (EN ISO 13937-3:2002)

## Odporność na światło / Light Fastness

4 (EN ISO 105; B02:2014-11)

## Odporność na tarcie / Fastness to rubbing

sucho / dry: 4-5, mokro / wet : 4-5 (EN ISO 105-X12:2016)

## Pilling / Pilling

4-5 (EN ISO 12945-2:2021; 2000cycles)

## Trudnopalność / Flammability

EN1021 -1 BS5852: Part 1:1979 Ignition source 0 (Cigarette)  
CAL TB 117

## Czynniki środowiskowe / Environment

OEKO-TEX® STANDARD 100  
REACH COMPLIANCE

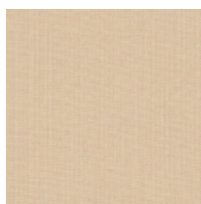


# Sawana

Extended

grupa / group 0

---



01



02



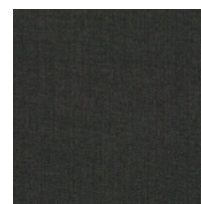
03



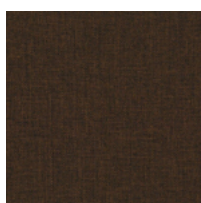
05



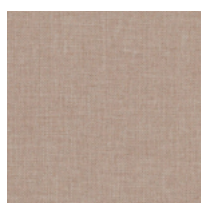
11



14



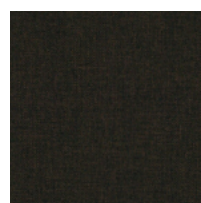
16



17



25



26



61



72

# Terra

Standard

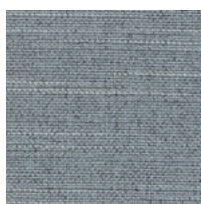
grupa / group 0



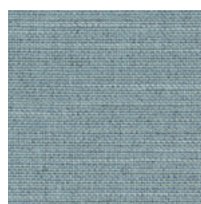
1



2



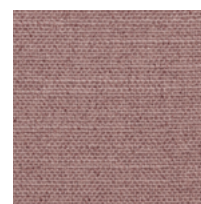
4



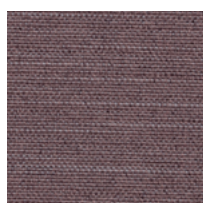
5



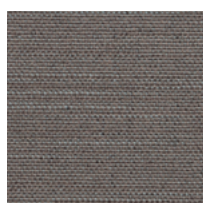
7



10



11



12



14

## Skład / Composition

## Gramatura / Weight

## Ścieralność / Abrasion Resistance

## Odporność na światło / Light Fastness

## Odporność na tarcie / Fastness to rubbing

## Pilling / Pilling

## Trudnopalność / Flammability

## Czynniki środowiskowe / Environment

100% PES

370 g/m<sup>2</sup> +/-5%

67 000 cykli / cycles (ISO 12947-2:2000)

5-6 (ISO 105 B02:2014-11 metoda 2)

sucho / dry: 4-5, mokro / wet: 4-5 (ISO 105 X12:2005)

5 (ISO 12945-2:2002)

Tak / Yes

GRS (Global Recycled Standard)

100% POST-CONSUMER RECYCLED POLYESTER

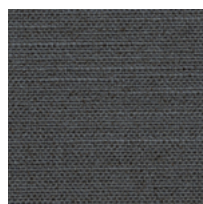


# Terra

Extended

grupa / group 0

---



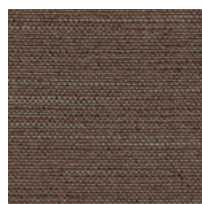
3



6



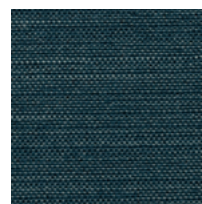
8



9

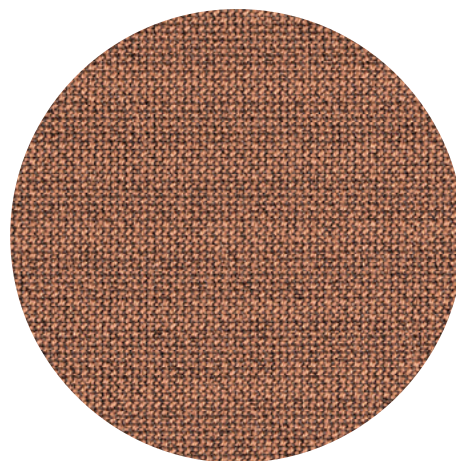


13



15



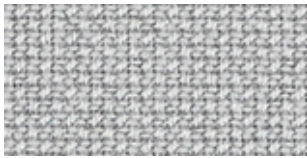


# CURA

by Gabriel

grupa / group A

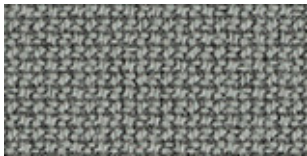
---



60000



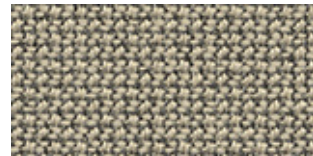
61232



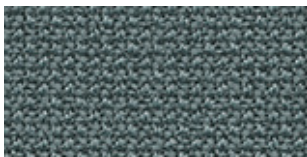
60327



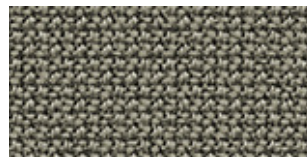
60112



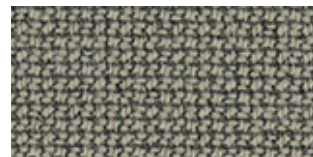
61168



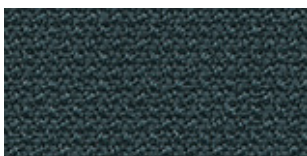
66166



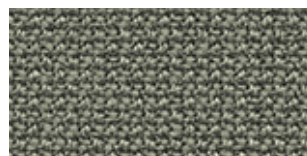
60110



61259



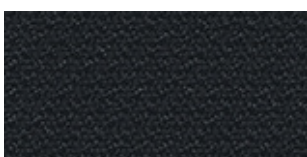
66165



60109



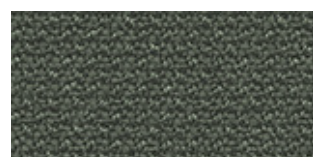
61169



60111



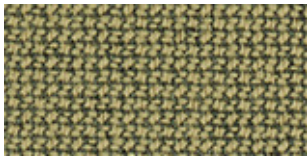
60999



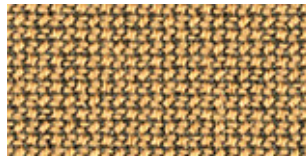
60019



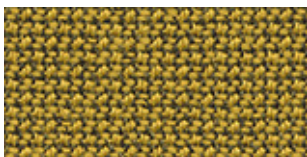
62125



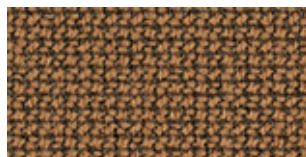
62126



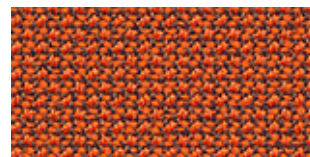
61233



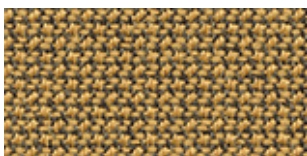
62084



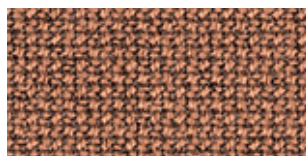
61260



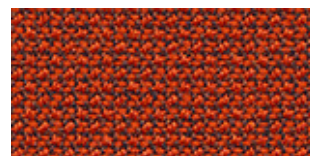
63078



62083



61257



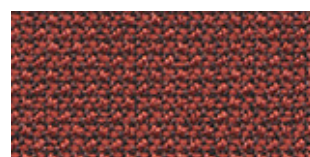
63012



62082

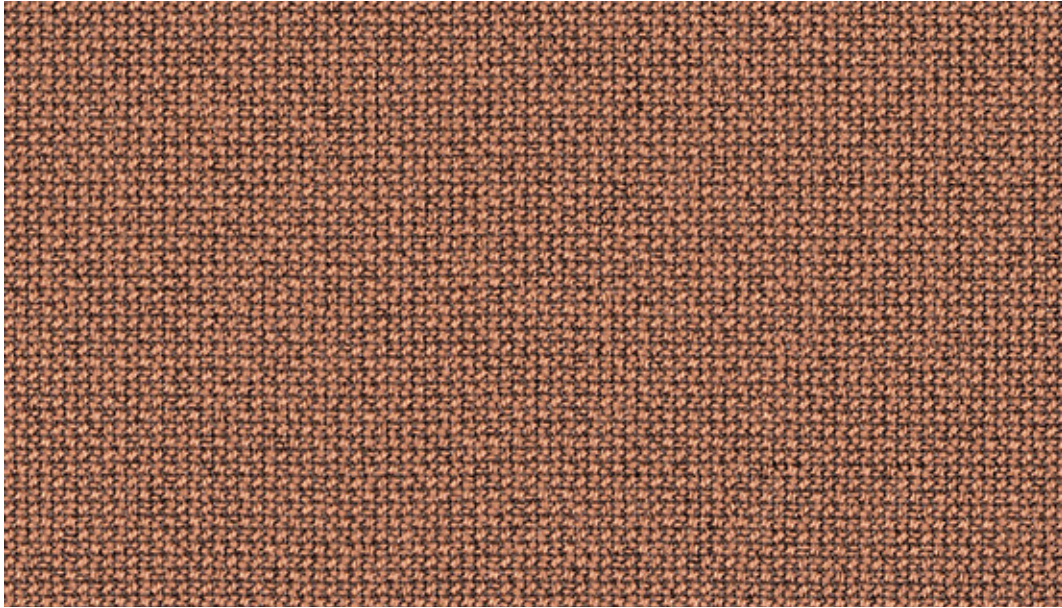


61258

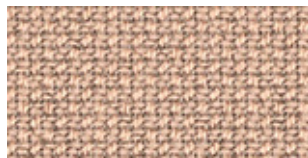


64196

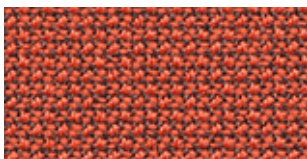




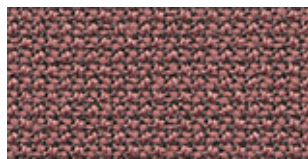
61257



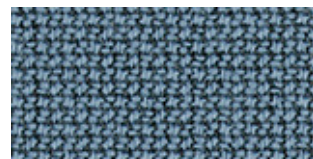
64240



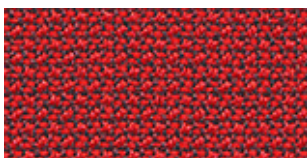
64197



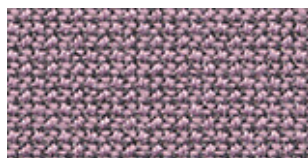
64195



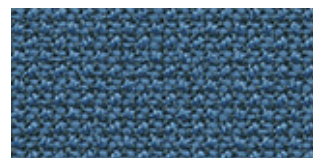
66239



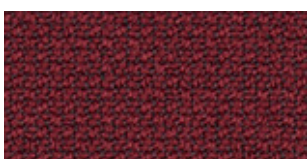
64013



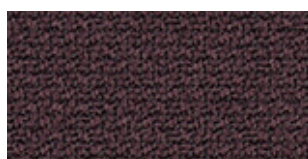
64194



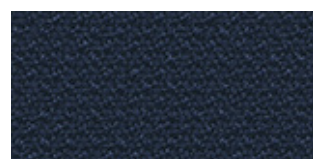
65105



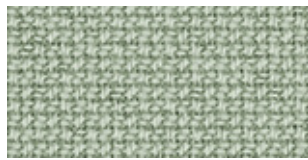
64252



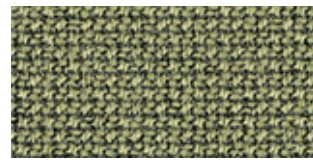
65137



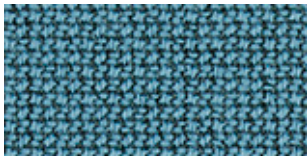
66169



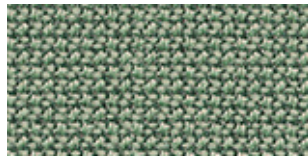
68262



68261



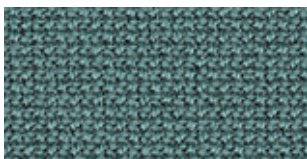
66240



68186



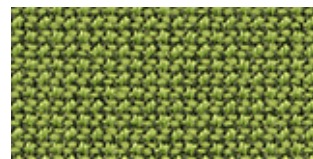
68181



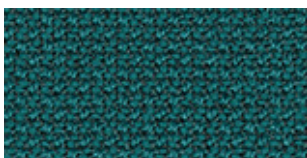
66167



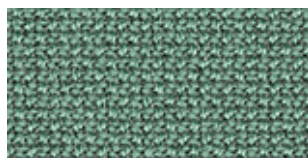
68263



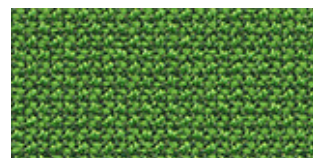
68180



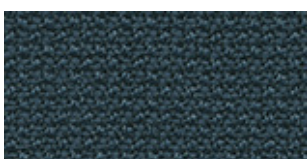
67084



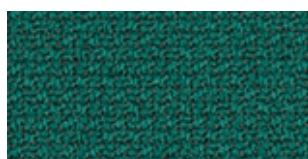
68187



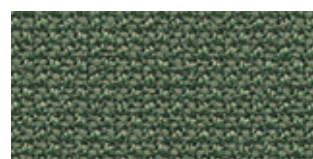
68183



66170



68264



68182

# CURA

Cura specifications: [www.gabriel.dk](http://www.gabriel.dk)

Please be aware that the PDF colour shades can appear different from the real fabric colours.  
We advise you to request actual fabric samples before ordering.

**Era**

---

**camira**

grupa / group A

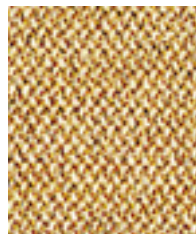
---

balma





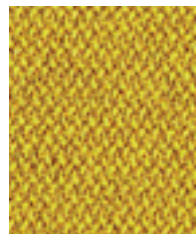
**Transition**  
CSE30



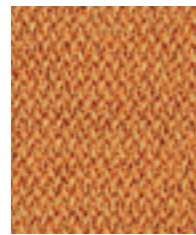
**Splitsecond**  
CSE31



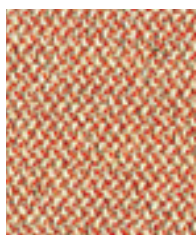
**Lifetime**  
CSE03



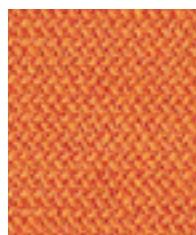
**Occasion**  
CSE32



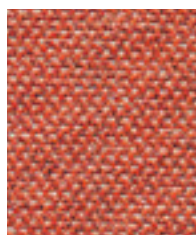
**Measure**  
CSE27



**Sequence**  
CSE25



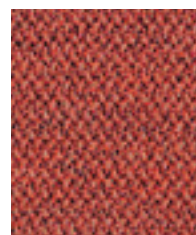
**Span**  
CSE05



**Turn**  
CSE26



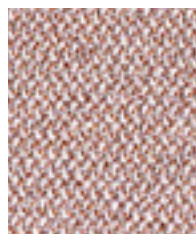
**Experience**  
CSE29



**Extent**  
CSE28



**Calendar**  
CSE19



**Date**  
CSE24



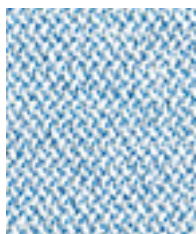
**Cycle**  
CSE06



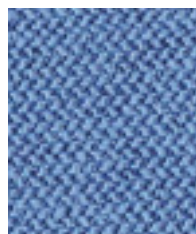
**Phase**  
CSE17



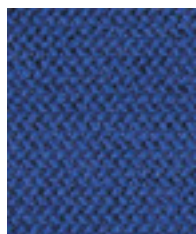
**Prime**  
CSE09



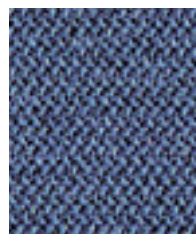
**Allowance**  
CSE38



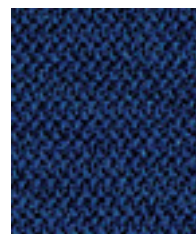
**Chapter**  
CSE08



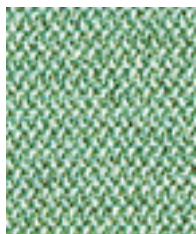
**Perennial**  
CSE12



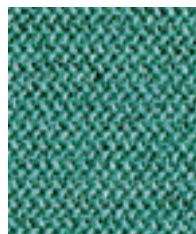
**Range**  
CSE42



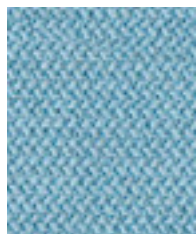
**Maturity**  
CSE40



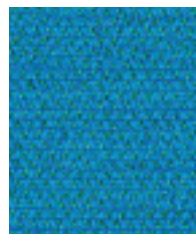
**Notation**  
CSE36



**Rest**  
CSE37



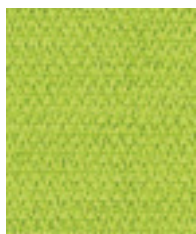
**Aeon**  
CSE20



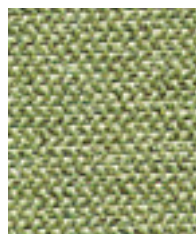
**Everlasting**  
CSE10



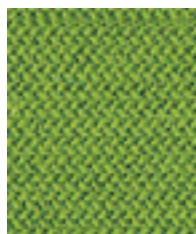
**Stage**  
CSE15



**Period**  
CSE07



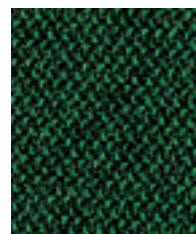
**Endurance**  
CSE34



**Timelapse**  
CSE16



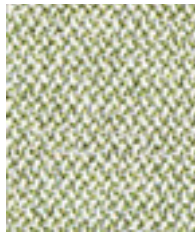
**Event**  
CSE18



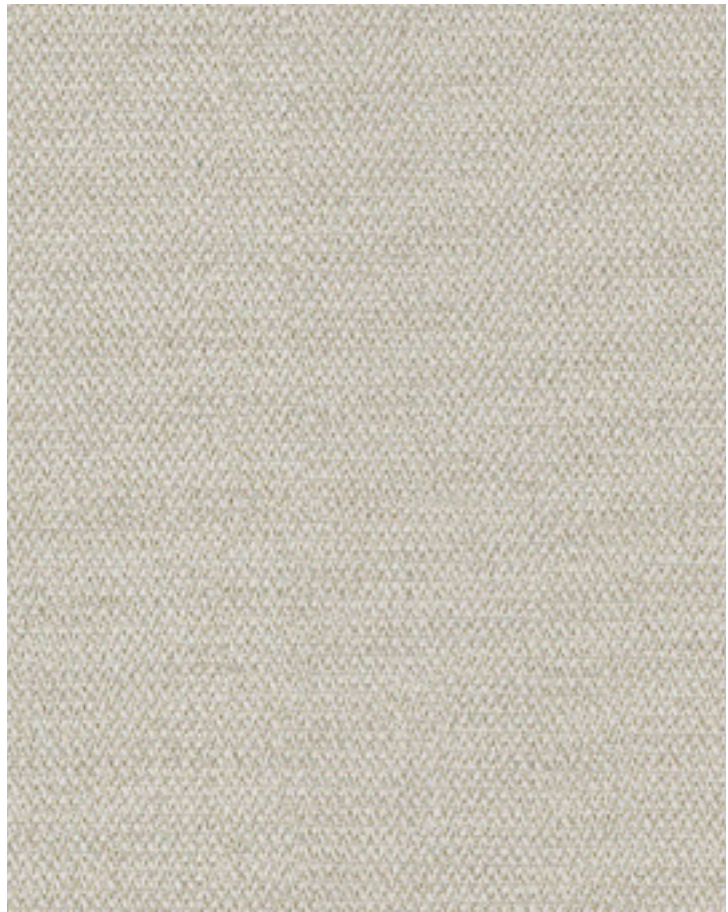
**Signature**  
CSE35



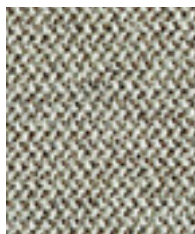
Photographic fabric scans are not colour accurate. Always request actual fabric samples before ordering.



**Analogue**  
CSE33



**Futurist**  
CSE01



**Prompt**  
CSE45



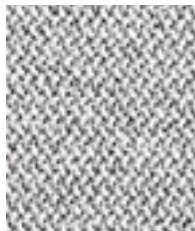
**Generation**  
CSE02



**Occurence**  
CSE23



**History**  
CSE21



**Memo**  
CSE46



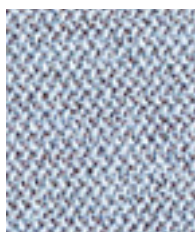
**Quota**  
CSE41



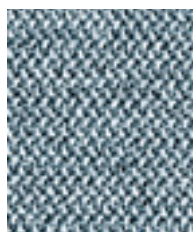
**Forecast**  
CSE11



**Present**  
CSE13



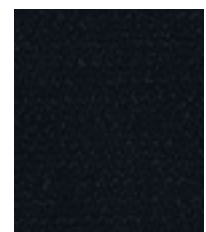
**Youth**  
CSE39



**Late**  
CSE43



**Elapse**  
CSE44



**Forward**  
CSE14



Task seating



Soft seating

Cigarette  
& Match

Washable

Bleach  
cleanable

Acoustic



Year guarantee



Medium Hazard

Era is a subtle, two tone polyester fabric containing stretch in both directions for ease of upholstery. The baby herringbone weave offers an understated contemporary texture while its colouring technique provides close up intrigue. The palette incorporates playful brights and sophisticated muted tones.



## Technical information

### UK

**Industry Application**  
Contract

**Composition**  
100% Polyester

**Environment**  
Certified to OEKO-TEX® Standard 100  
Certified to Indoor Advantage™ Gold  
Non metallic dyestuffs

**Width**  
140 cm minimum

**Weight**  
320 g/m<sup>2</sup> ±5% (448 g/lin.m ±5%)

**Abrasion Resistance\***  
Heavy duty / 10 year guarantee  
Independently certified to ≥100,000  
Martindale cycles

**Flammability**  
EN 1021 - 1 (cigarette)  
EN 1021 - 2 (match)  
BS 7176 Low Hazard  
EN 13501-1 Adhered Class B, s1, d0  
EN 13501-1 Un-adhered Class C, s1, d0  
**Optional: Please specify when ordering:**  
BS 5852 Ignition Source 5 with EnviroFlam5  
BS 7176 Medium Hazard with EnviroFlam5  
The Furniture and Furnishing (Fire Safety) Regulations 1988 (UK domestic cigarette and match) with EnviroFlam5  
*Note: Flammability performance is dependent on components used. Our certificates show what substrates have been used in our tests. For composite tests customers must ensure their complete furniture meets the necessary standards.*

**Light Fastness**  
5 (ISO 105 - B02)

**Fastness to Rubbing**  
Wet: 4, Dry: 4 (ISO 105 - X12)

**Acoustic Properties**  
Acoustically transparent, acoustic graphs available upon request.

**Bleach Cleanable**  
ISO 105 E03 colour change 4 for dilution factor 1:4 chlorine solution

**Cleaning**  
Vacuum regularly. Wipe with a damp cloth using a proprietary upholstery shampoo/soap. For deeper cleaning use steam, bleach, alcohol or professionally dry clean. Can be washed at 60°C. Full details can be found in our cleaning and disinfection guide.

\*Abrasion testing produces a wide variability of results even from the same test sample. The independent certificate of ≥100,000 cycles is available on our website or from our customer service team. Internally we also specify this product at >100,000 cycles which we believe is realistic for repeatability of testing. Please be aware that abrasion testing alone is not a reliable indicator of the actual wear performance of fabrics. We're so confident in the durability of our products that we provide a robust 10 year guarantee (full details available). Please note that seam performance is dependent on seam construction and needle and thread type. We recommend that appropriate sewing advice be taken. Batch to batch variations in shade may occur within commercial tolerances. We reserve the right to alter technical specifications without notice. The Unregistered Design Rights and the Copyright in all designs are the exclusive property of Camira Fabrics Limited.

### D

**Einsatzbereich**  
Contract

**Zusammensetzung**  
100% Polyester

**Umweltfreundlich**  
Nach Zertifikat OEKO-TEX® Standard 100  
Nach Zertifikat Indoor Advantage™ Gold  
Nicht schwermetallhaltige Farbstoffe

**Breite**  
140 cm nutzbare Breite

**Gewicht**  
320 g/m<sup>2</sup> ±5% (448 g/lfd.m ±5%)

**Scheuerfestigkeit\***  
Schwerer Objekteinsetz / 10 Jahre Garantie  
Extern zertifiziert mit ≥100,000  
Scheuertouren Martindale

**Feuersicherung**  
EN 1021 - 1 (Zigarettenfest)  
EN 1021 - 2 (Streichholzfest)  
BS 7176 Low Hazard  
EN 13501-1 Adhered Class B, s1, d0  
EN 13501-1 Un-adhered Class C, s1, d0  
**Bitte bei Auftragserteilung angeben:**  
BS 5852 Ignition Source 5 mit EnviroFlam5  
BS 7176 Medium Hazard mit EnviroFlam5  
The Furniture and Furnishing (Fire Safety) Regulations 1988 (UK Wohnmöbel Zigarettenfest und Streichholzfest) mit EnviroFlam5  
*Bemerkung: Die Schwerentflammbarkeit hängt von den verwendeten Komponenten ab. Unsere Zertifikate zeigen auf, welche Substrate bei den Tests verwendet wurden. Bei Verbundtests muss sichergestellt sein, daß das komplette Möbel den entsprechenden Standards entspricht.*

**Lichtechtheit**  
5 (ISO 105 - B02)

**Reibechtheit**  
Nass: 4, Trocken: 4 (ISO 105 - X12)

**Akustische Eigenschaften**  
Akustisch durchlässig, akustische Messwerte auf Anfrage.

**Chlorbleiche-Beständig**  
ISO 105 E03 Farbänderung 4 bei einer 1:4 verdünnten Chlor-Lösung

**Reinigung**  
Regelmässig absaugen. Mit einem feuchten Tuch abwischen oder mit einem geeigneten Polstershampoo behandeln. Für eine Grundreinigung bitte Dampf, Chlorbleiche, Alkohol oder professionelle Trockenreinigung verwenden. Kann bei 60°C gewaschen werden. Weitere Informationen finden Sie in unserem Leitfaden zur Reinigung und Desinfektion.

\*Die Scheuerfestigkeitsprüfung ergibt selbst bei gleichen Testmustern stark abweichende Ergebnisse. Das Zertifikat eines unabhängigen Prüfinstitutes über ≥100,000 Scheuertouren erhalten Sie von unserem Vertriebsinnendienst oder auf unserer Webseite. Intern spezifizieren wir auch dieses Produkt mit >100,000 Scheuertouren, die in der Serienfertigung als realistisch angenommen werden. Bitte nehmen Sie zur Kenntnis, dass die Scheuerfestigkeitsprüfung allein keine Aussagekraft über die Langlebigkeit eines Bezugsstoffes hat. Wir sind von der Langlebigkeit unserer Produkte überzeugt und bieten daher 10 Jahre Garantie (Details auf Anfrage). Eine optimale Nahtausrissfestigkeit hängt von der Nahtfahne, der verwendeten Nadel und dem Näh-Garn ab. Wir empfehlen daher Näherische durchzuführen. Handelsübliche Farbabweichungen können auftreten und berechtigen nicht zur Reklamation. Wir behalten uns die Änderung technischer Spezifikationen vor. Die registrierten und nicht registrierten Urheberrechte der Dessinierungen sind ausschliessliches Eigentum der Camira Fabrics Limited.

### F

**Application industrielle**  
Contract

**Composition**  
100% Polyester

**Écologique**  
Certifié à OEKO-TEX® Standard 100  
Certifié à Indoor Advantage™ Gold  
Tintures non métalliques

**Largeur**  
140 cm minimum

**Poids**  
320 g/m<sup>2</sup> ±5% (448 g/m.l ±5%)

**Résistance à l'abrasion\***  
Usage intense / garantie 10 ans  
Certificat indépendant ≥100,000 cycles  
Martindale

**Flammabilité**  
EN 1021 - 1 (cigarette)  
EN 1021 - 2 (allumette)  
BS 7176 Low Hazard  
EN 13501-1 Adhered Class B, s1, d0  
EN 13501-1 Un-adhered Class C, s1, d0  
**Prière de le mentionner lors de la commande:**  
BS 5852 Ignition Source 5 avec EnviroFlam5  
BS 7176 Medium Hazard avec EnviroFlam5  
The Furniture and Furnishing (Fire Safety) Regulations 1988 (UK domicile cigarette et allumette) avec EnviroFlam5  
*Notez: La performance de flammabilité dépend des composantes utilisées. Nos certificats indiquent les substrats utilisés dans nos tests. Pour les tests composites, les clients doivent s'assurer que leurs meubles complets satisfont aux normes nécessaires.*

**Solidité à la lumière**  
5 (ISO 105 - B02)

**Solidité au Frottement**  
Mouillé: 4, Sec: 4 (ISO 105 - X12)

**Propriétés Acoustiques**  
Acoustiquement transparent, graphiques acoustiques disponibles sur demande.

**Nettoyage au javel**  
ISO 105 E03 changement de couleur 4 pour le facteur de dilution 1: 4 solution de chlore

**Nettoyage**  
Passez l'aspirateur régulièrement. Essayez avec un chiffon humide en utilisant un shampooing/savon pour tissu d'ameublement exclusif. Pour un nettoyage en profondeur, utilisez la vapeur, javel, alcool ou un nettoyage à sec professionnel. Peut être lavé à la machine, programme maximum 60°C. Vous trouverez tous les détails dans notre guide de nettoyage et de désinfection.

\*Les tests de résistance à l'abrasion proposent une large variété de résultat final, parfois sur le même échantillon de tissu. Le certificat indépendant de ≥100,000 cycles est disponible sur notre site internet; vous pouvez également contacter notre Service Clients. Nous validons également ce produit – en interne – à >100,000 cycles; ce qui est, d'après nous, plus réaliste dans le but d'obtenir une continuité égale des résultats de tests. Merci de noter que l'abrasion seule ne constitue pas un indicateur de confiance dans la performance du tissu à long terme. Nous avons une confiance absolue en nos produits et leur durabilité, c'est pour cela que nous vous offrons une garantie robuste de 10 ans. Veuillez noter que la performance du joint dépend de sa construction ainsi que de l'aiguille et du type de fil utilisés. Une variation de couleurs peut provenir (commerciallement tolérable). Nous réservons le droit de changer les spécifications techniques sans préavis. Les Droits de Conception non-enregistrés et les droits d'auteur de tous les motifs sont la propriété exclusive de Camira Fabrics Limited.

### ES

**Aplicación Industrial**  
Contract

**Composición**  
100% Poliéster

**Ambiental**  
Certificado de OEKO-TEX® Standard 100  
Certificado de Indoor Advantage™ Gold  
Tintes no metálicos

**Ancho**  
140 cm mínimo

**Peso**  
320 g/m<sup>2</sup> ±5% (448 g/lin.m ±5%)

**Resistencia a la abrasión\***  
Garantía de 10 años con uso intenso  
independientemente del certificado de  
≥100,000 Ciclos Martindale

**Inflamabilidad**  
EN 1021 - 1 (cigarillo)  
EN 1021 - 2 (cerilla)  
BS 7176 Low Hazard  
EN 13501-1 Adhered Class B, s1, d0  
EN 13501-1 Un-adhered Class C, s1, d0  
**Por favor especificar cuando se requiere en el pedido:**  
BS 5852 Ignition Source 5 con EnviroFlam5  
BS 7176 Medium Hazard con EnviroFlam5  
The Furniture and Furnishing (Fire Safety) Regulations 1988 (UK doméstico cigarillo y cerilla) con EnviroFlam5  
*Nota: El rendimiento de la inflamabilidad depende de los componentes usados. Nuestros certificados muestran qué substratos se han usado en nuestros tests. Para tests compuestos nuestros clientes deben asegurar si sus muebles cumplen la normativa al uso.*

**Solidez a la luz**  
5 (ISO 105 - B02)

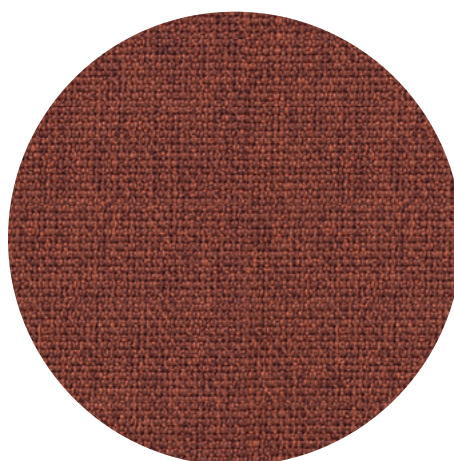
**Solidez al rozamiento**  
Húmedo: 4, Seco: 4 (ISO 105 - X12)

**Acústico Propiedades**  
Acústicamente transparente, gráficos disponibles bajo petición.

**Posibilidad lavado con Lejía**  
ISO 105 E03 cambio color 4 para un factor de disolución 1:4 solución cloro

**Limpieza**  
Usa aspirador regularmente. Limpiar con un trapo usando jabón y agua o producto limpieza para tapicerías. Para una limpieza más profunda usar vapor, lejía, alcohol o limpieza en seco. Se puede lavar a 60°C. Los detalles completos se encuentran en nuestra guía de limpieza y desinfección.

\*Los Test de Abrasión producen unos resultados muy variables incluso con la misma muestra. El certificado de ≥100,000 ciclos Martindale está disponible en nuestra web o se puede pedir al Departamento Comercial. Internamente también certificamos este producto >100,000 ciclos, que pensamos que es lo más realista posible en este caso, con una repetición de resultados tan dispares. Tengan en cuenta que el Test de Abrasión solo no es un indicador fiable sobre el desgaste de un tejido. De hecho, estamos tan convencidos en la durabilidad de nuestros tejidos, que ofrecemos una garantía de 10 años (detalles completos disponibles). Tenga en cuenta que el rendimiento de la costura depende de la construcción de la costura, además de la aguja y del tipo de rosca. Le recomendamos que se aconsejen para coser la costura. Las variaciones de lote a lote en la sombra se puede producir dentro de tolerancias comerciales. Nos reservamos el derecho a efectuar modificaciones técnicas sin previo aviso. Los derechos sobre los diseños no registrados y los derechos de autor en todos los diseños son propiedad exclusiva de Camira Fabrics Limited.



# MEDLEY™

---

by Gabriel

grupa / group A

---

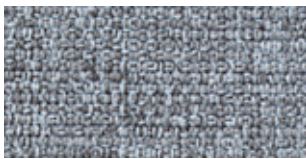




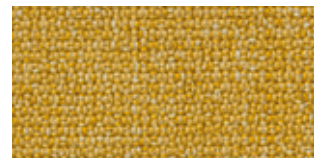
60003



61189



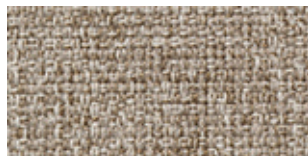
66008



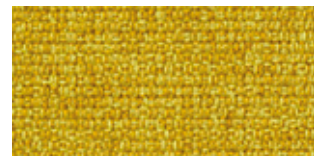
62054



60167



61002



62002



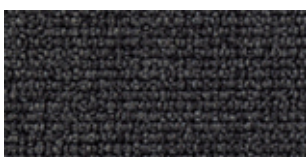
60004



61003



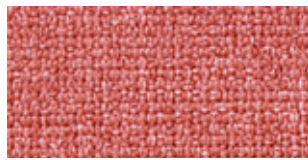
67002



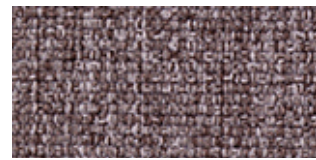
60999



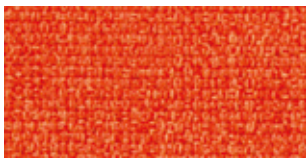
61004



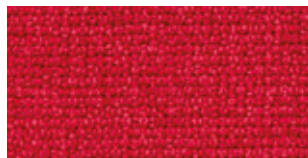
63064



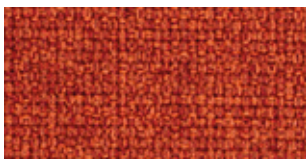
65011



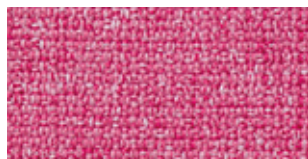
63013



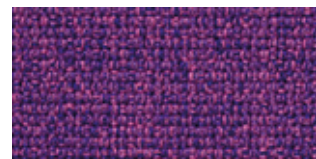
64019



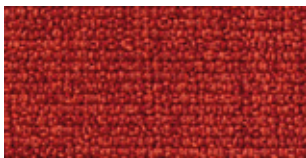
63017



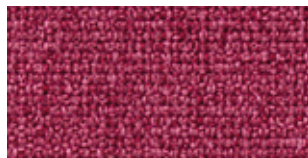
64124



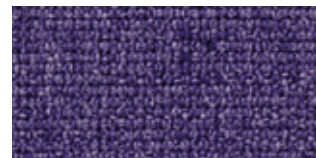
65012



63016



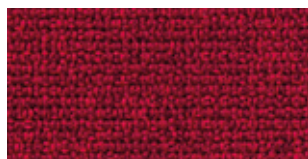
64125



65086



63063

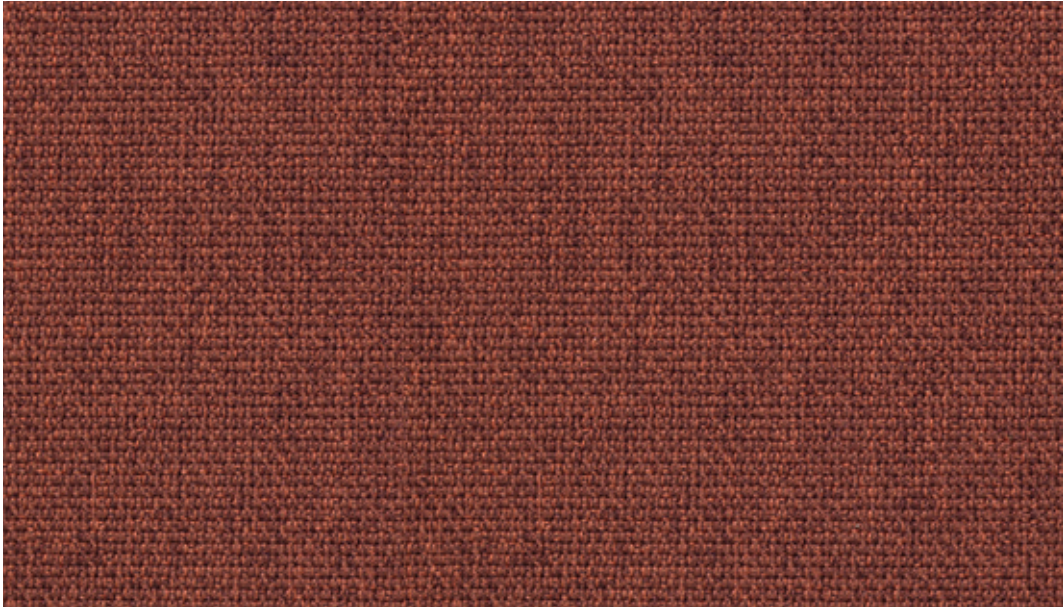


64123

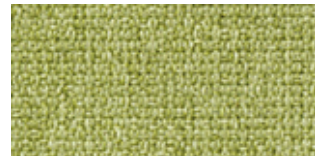


66145





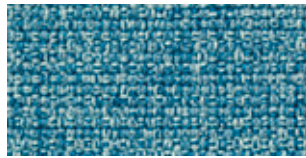
63063



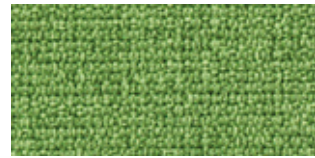
68114



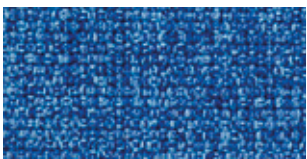
67052



67006



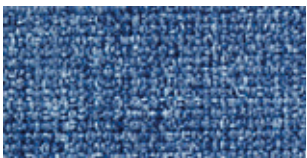
68115



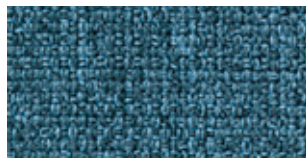
66009



67054



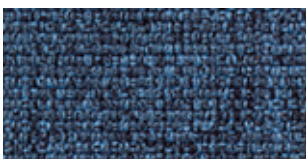
66144



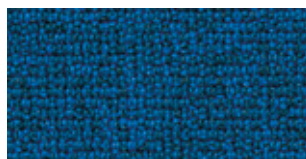
67053



68002



66010



66007



68005

# MEDLEY™

---

Medley specifications: [www.gabriel.dk](http://www.gabriel.dk)

Please be aware that the PDF colour shades can appear different from the real fabric colours.  
We advise you to request actual fabric samples before ordering.

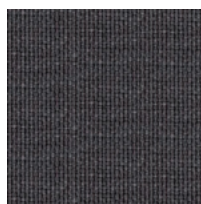
# Next

Standard

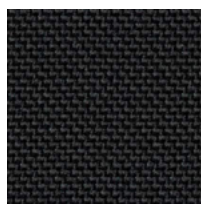
grupa / group A



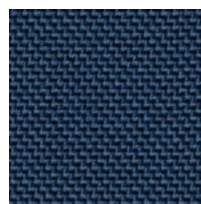
10



14



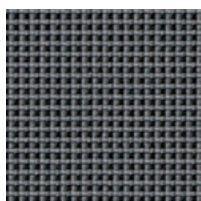
16



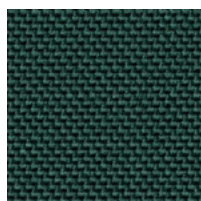
15

Extended

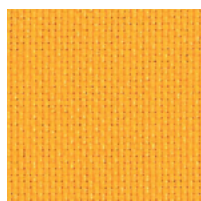
grupa / group A



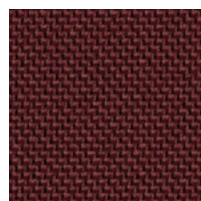
12



11



1



7

**Skład / Composition**

**Gramatura / Weight**

**Ścieralność / Abrasion Resistance**

**Odporność na światło / Light Fastness**

**Pilling / Pilling**

**Trudnopalność / Flammability**

100% Poliester / Polyester

340 g/m<sup>2</sup>

100 000 cykli / cycles (PN-EN ISO 12947-2)

5 (PN-EN ISO 105-B02)

5 (PN-EN ISO 12945-2)

papieros / cigarette: PN-EN 1021-1:2014-12,  
zapałka / match: PN-EN 1021-2:2014-12



# Agava

Standard

grupa / group B



Ivory 126



Calico 100



Biscuit 117



Icicle 149



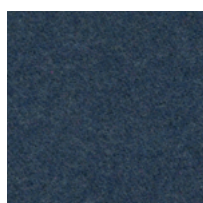
Pewter 104



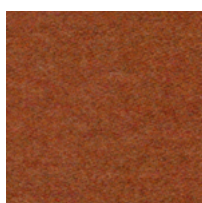
Grey 850



Burgundy 135



Indigo 700



Rust 250



Terracota 115



Mist 145

## Skład / Composition

70% wełna / wool, 20% poliester / polyester, 5% poliamid / polyamide, 5% inne włókna / other fibres

## Gramatura / Weight

325 g/m<sup>2</sup>

## Ścieralność / Abrasion Resistance

100 000 cykli / cycles (EN ISO 12 947)

## Odporność na światło / Light Fastness

4-5 (EN ISO 105-B02)

## Odporność na tarcie / Fastness to rubbing

mokro / wet: 4, sucho / dry: 4-5 (EN ISO 105 X12)

## Pilling / Pilling

4-5 (EN ISO 12 945-2)

## Trudnopalność / Flammability

EN 1021-1 (papieros / cigarette)  
EN 1021-2 (zapałka / match)  
BS 5852 Part 1 0, 1 (papieros i zapałka / cigarette and match)

## Czynniki środowiskowe / Environment

Oeko-Tex Standard 100 klasa II  
REACH  
Global Recycled Standard

## Akustyczność / Acoustic

0.70 KLASA C (EN ISO 354 & 11654)





# Agava

Extended

grupa / group B

---



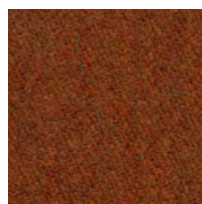
Cameo 21



Dust 22



Chinchila 08



Autumn 58



Sienna 62



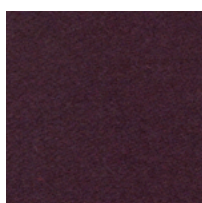
Fire 28



Fuchsia 20



Plum 19



Eggplant 12



Irys 38



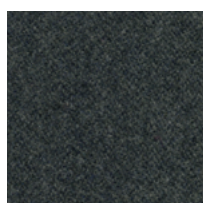
Orchid 40



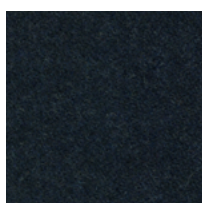
Hyacinth 39



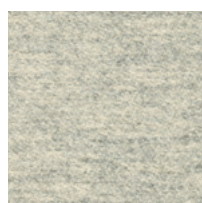
Cloud 16



Slate 47



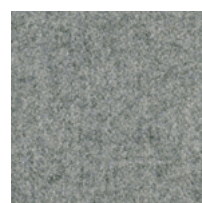
Storm 48



Linen 32



Pelican 57



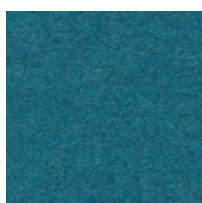
Silver 03



Arctic 69



Petrol 44



Emerald 18



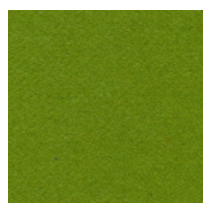
Turquoise 30



Jade 42



Deagrass 64



Woodbine 27



Mustard 63



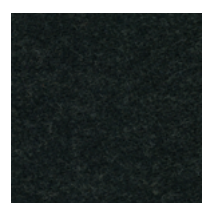
Basil 43



Lichen 24



Haze 46



Onyx 23

# Main Line Flax

---

**camira**

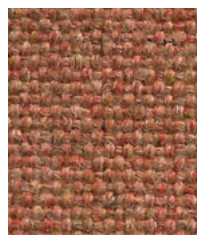
grupa / group B

---



# Main Line Flax

www.camirafabrics.com



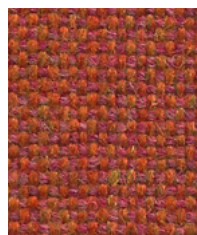
**Alperton**  
MLF43



**Lambeth**  
MLF08



**Leyton**  
MLF13



**Balham**  
MLF44



**Barking**  
MLF45



**Aldgate**  
MLF01



**Kilburn**  
MLF06



**Parsons**  
MLF14



**Blackwall**  
MLF46



**Northfields**  
MLF40



**Barbican**  
MLF03



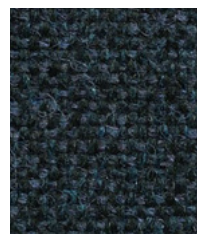
**Brixton**  
MLF47



**Chigwell**  
MLF48



**Embankment**  
MLF50



**Tower**  
MLF36



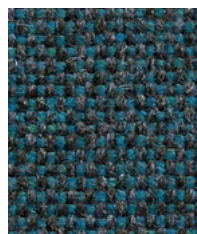
**Waterloo**  
MLF21



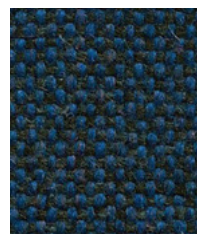
**Epping**  
MLF51



**Clapham**  
MLF49



**Brompton**  
MLF35



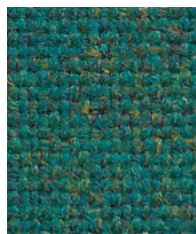
**Victoria**  
MLF19



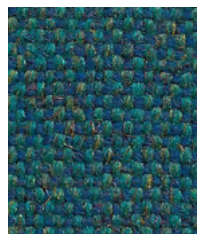
**Westminster**  
MLF22



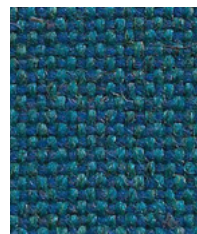
**Bayswater**  
MLF24



**Stanmore**  
MLF37



**Pimlico**  
MLF34



**Holborn**  
MLF05



**Newbury**  
MLF10



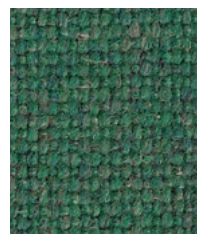
**Monument**  
MLF09



**Greenwich**  
MLF52



**Bethnal**  
MLF25



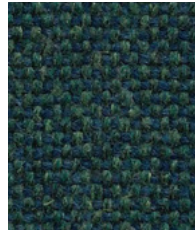
**Harrow**  
MLF54



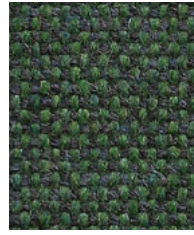
Photographic fabric scans are not colour accurate. Always request actual fabric samples before ordering.



**Hornchurch**  
MLF55



**Hampstead**  
MLF53



**Greenford**  
MLF32



**Moorgate**  
MLF57



**Tuffnell**  
MLF18



**Farringdon**  
MLF29



**Kentish**  
MLF56



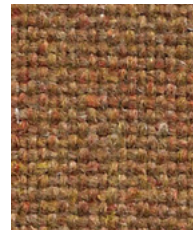
**Woodford**  
MLF67



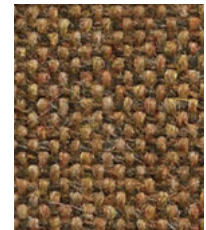
**Goldhawk**  
MLF31



**Tooting**  
MLF17



**Perivale**  
MLF59



**Stockwell**  
MLF15



**Kensington**  
MLF07



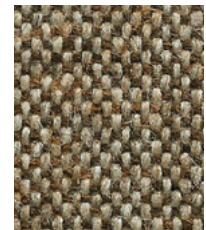
**Upminster**  
MLF20



**Morden**  
MLF12



**Pinner**  
MLF60



**Bank**  
MLF23



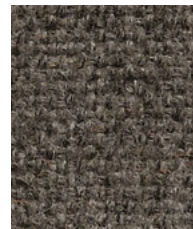
**Archway**  
MLF02



**Redbridge**  
MLF61



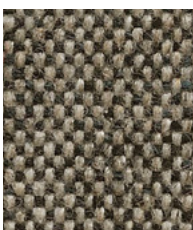
**Camden**  
MLF26



**Richmond**  
MLF62



**Temple**  
MLF16



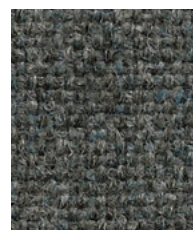
**Shadwell**  
MLF63



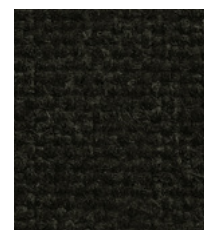
**Stratford**  
MLF64



**Watford**  
MLF65



**Whitechapel**  
MLF66



**Edgware**  
MLF28



Task seating



Soft seating



Panels



Curtains

Cigarette  
& Match

Medium Hazard



Environmental



Acoustic



Year guarantee

A beloved Camira textile, Main Line Flax is made from the best nature has to offer. A blend of pure wool and harvested flax creates this multi-tonal, inherently flame-retardant fabric.



## Technical information

### UK

#### Composition

75% Virgin Wool, 25% Flax

#### Environment

Certified to the EU Ecolabel  
Certified to Indoor Advantage™ Gold  
Rapidly renewable and compostable  
Made from wool and plant fibre

#### Width

140 cm minimum

#### Weight

437g/m<sup>2</sup> ±5% (612g/lin.m ±5%)

#### Abrasion Resistance\*

Heavy duty / 10 year guarantee.  
Independently certified to ≥50,000  
Martindale cycles

#### Flammability

EN 1021 - 1 (cigarette)  
EN 1021 - 2 (match)  
BS 7176 Low Hazard  
BS 5852 Ignition Source 5  
BS 7176 Medium Hazard  
NF D 60-013  
ÖNORM B 3825 & A 3800-1  
(58kg/m<sup>3</sup> CMHR Foam)  
UNI 9175 Classe 1 IM  
BS 476 Part 7 Class 1 (Adhered)  
EN 13501-1 Adhered Class B, s1 ,d0  
BS 5867-2: Type B Curtains & Drapes  
IMO FTP Code (Part 8)  
The Furniture and Furnishing (Fire Safety)  
Regulations 1988 (UK domestic cigarette  
and match)  
*Note: Flammability performance is  
dependent on components used. Our  
certificates show what substrates have been  
used in our tests. For composite tests  
customers must ensure their complete  
furniture meets the necessary standards.*

#### Light Fastness

4-5 (ISO 105 - B02)

#### Fastness to Rubbing

Wet: 3, Dry: 4 (ISO 105 - X12)

#### Acoustic Properties

Acoustically transparent. Acoustic graphs  
available upon request

#### Cleaning

Vacuum regularly. Wipe with a damp cloth  
using a proprietary upholstery shampoo/  
soap. For deeper cleaning use steam or  
professionally dry clean. Full details can be  
found in our cleaning and disinfection  
guide.

\*Abrasion testing produces a wide variability of results even from the same test sample. The independent certificate of ≥50,000 cycles is available on our website or from our customer service team. Internally we specify this product at >35,000 cycles which we believe is realistic for repeatability of testing. Please be aware that abrasion testing alone is not a reliable indicator of the actual wear performance of fabrics. We're so confident in the durability of our products that we provide a robust 10 year guarantee (full details available). Please note that seam performance is dependent on seam construction and needle and thread type. We recommend that appropriate sewing advice be taken. Batch to batch variations in shade may occur within commercial tolerances. We reserve the right to alter technical specifications without notice. The Unregistered Design Rights and the Copyright in all designs are the exclusive property of Camira Fabrics Limited.

### D

#### Zusammensetzung

75% Schurwolle, 25% Flachs

#### Umweltfreundlich

Nach Zertifikat EU Ecolabel  
Nach Zertifikat Indoor Advantage™ Gold  
Schnell erneuerbar und kompostierbar  
Mit Wolle und Pflanzfasern gefertigt

#### Breite

140 cm nutzbare Breite

#### Gewicht

437g/m<sup>2</sup> ±5% (612g/ldf.m ±5%)

#### Scheuerfestigkeit\*

Schwerer Objekteinsetz / 10 Jahre  
Garantie. Extern zertifiziert mit ≥50,000  
Scheuertouren Martindale

#### Feuersicherung

EN 1021 - 1 (Zigarettestest)  
EN 1021 - 2 (Streichholztest)  
BS 7176 Low Hazard  
BS 5852 Ignition Source 5  
BS 7176 Medium Hazard  
NF D 60-013  
ÖNORM B 3825 & A 3800-1  
(mit 58 kg/m<sup>3</sup> CMHR Schaum)  
UNI 9175 Classe 1 IM  
BS 476 Part 7 Class 1 (Adhered)  
EN 13501-1 Adhered Class B, s1 ,d0  
BS 5867-2: Type B Curtains & Drapes  
IMO FTP Code (Part 8)  
The Furniture and Furnishing (Fire Safety)  
Regulations 1988 (UK Wohnmöbel  
Zigarettestest und Streichholztest)  
*Bemerkung: Die Schwerentflammbarkeit  
hängt von den verwendeten Komponenten  
ab. Unsere Zertifikate zeigen auf, welche  
Substrate bei den Tests verwendet wurden.  
Bei Verbundtests muss sichergestellt  
sein, daß das komplette Möbel den  
entsprechenden Standards entspricht.*

#### Lichtechtheit

4-5 (ISO 105 - B02)

#### Reibechtheit

Nass: 3, Trocken: 4 (ISO 105 - X12)

#### Akustische Eigenschaften

Akustisch durchlässig. Akustische  
Messwerte auf Anfrage

#### Reinigung

Regelmässig absaugen. Mit einem  
feuchten Tuch abwischen oder mit einem  
geeigneten Polstershampoo behandeln.  
Für eine Grundreinigung bitte Dampf oder  
professionelle Trockenreinigung  
verwenden. Weitere Informationen finden  
Sie in unserer Leitfaden zur Reinigung  
und Pflege.

\*Die Scheuerfestigkeitsprüfung ergibt selbst bei gleichen Testmustern stark abweichende Ergebnisse. Das Zertifikat eines unabhängigen Prüfinstitutes über ≥50,000 Scheuertouren erhalten Sie von unserem Vertriebsinnendienst oder auf unserer Webseite. Intern spezifizieren wir dieses Produkt mit >35,000 Scheuertouren, die in der Serienfertigung als realistisch angenommen werden. Bitte nehmen Sie zur Kenntnis, dass die Scheuerfestigkeitsprüfung allein keine Aussagekraft über die Langlebigkeit eines Bezugstoffes hat. Wir sind von der Langlebigkeit unserer Produkte überzeugt und bieten daher 10 Jahre Garantie ( Details auf Anfrage). Eine optimale Nahtausreissfestigkeit hängt von der Nahtfahne, der verwendeten Nadel und dem Näh-Garn ab. Wir empfehlen daher Nähveruche durchzuführen. Handelsübliche Farbabweichungen können auftreten und berechtigen nicht zur Reklamation. Wir behalten uns die Änderung technischer Spezifikationen vor. Die registrierten und nicht registrierten Urheberrechte der Dessinierungen sind ausschliessliches Eigentum der Camira Fabrics Limited.

### F

#### Composition

75% Laine Vierge, 25% Lin

#### Écologique

Avec le certificat EU Ecolabel  
Certifié à Indoor Advantage™ Gold  
Rapidement renouvelable et compostable  
Fabriqué avec de la Laine et des fibres  
originaire de Tiges

#### Largeur

140 cm minimum

#### Poids

437g/m<sup>2</sup> ±5% (612g/m.l ±5%)

#### Résistance à l'abrasion\*

Usage intense / garantie 10 ans. Certificat  
indépendant ≥50,000 cycles Martindale

#### Flammabilité

EN 1021 - 1 (cigarette)  
EN 1021 - 2 (allumette)  
BS 7176 Low Hazard  
BS 5852 Ignition Source 5  
BS 7176 Medium Hazard  
NF D 60-013  
ÖNORM B 3825 & A 3800-1  
(sur 58 kg/m<sup>3</sup> CMHR mousse)  
UNI 9175 Classe 1 IM  
BS 476 Part 7 Class 1 (Adhered)  
EN 13501-1 Adhered Class B, s1 ,d0  
BS 5867-2: Type B Curtains & Drapes  
IMO FTP Code (Part 8)  
The Furniture and Furnishing (Fire Safety)  
Regulations 1988 (UK domicile cigarette  
et allumette)  
*Notez: La performance de flammabilité  
dépend des composantes utilisées. Nos  
certificats indiquent les substrats utilisés  
dans nos tests. Pour les tests composites,  
les clients doivent s'assurer que leurs  
meubles complets satisfont aux normes  
nécessaires.*

#### Solidité à la lumière

4-5 (ISO 105 - B02)

#### Solidité au frottement

Mouillé: 3, Sec: 4 (ISO 105 - X12)

#### Propriétés Acoustiques

Acoustiquement transparent. Graphiques  
acoustiques disponibles sur demande

#### Nettoyage

Passer l'aspirateur régulièrement. Essayez  
avec un chiffon humide en utilisant un  
shampooing/savon pour tissu  
d'ameublement exclusif. Pour un nettoyage  
en profondeur, utilisez la vapeur ou un  
nettoyage à sec professionnel. Vous  
trouverez tous les détails dans notre guide  
de nettoyage et de désinfection.

\*Les tests de résistance à l'abrasion proposent une large variété de résultat final, parfois sur le même échantillon de tissu. Le certificat indépendant de ≥50,000 cycles est disponible sur notre site internet; vous pouvez également contacter notre Service Clients. Nous validons ce produit – en interne – à >35,000 cycles; ce qui est, d'après nous, plus réaliste dans le but d'obtenir une continuité égale des résultats de tests. Merci de noter que l'abrasion seule ne constitue pas un indicateur de confiance dans la performance du tissu à long terme. Nous avons une confiance absolue en nos produits et leur durabilité, c'est pour cela que nous vous offrons une garantie robuste de 10 ans. Veuillez noter que la performance du joint dépend de sa construction ainsi que de l'aiguille et du type de fil utilisés. Une variation de couleurs peut provenir (commerciallement tolérable). Nous réservons le droit de changer les spécifications techniques sans préavis. Les Droits de Conception non-enregistrés et les droits d'auteur de tous les motifs sont la propriété exclusive de Camira Fabrics Limited.

### ES

#### Composición

75% Lana Virgen, 25% Lino

#### Ambiental

Certificado con EU Ecolabel  
Certificado de Indoor Advantage™ Gold  
Rapidamente renovable y compostable  
Producido con lana y fibras naturales

#### Ancho

140 cm mínimo

#### Peso

437g/m<sup>2</sup> ±5% (612g/lin.m ±5%)

#### Resistencia a la abrasión\*

Garantía de 10 años con uso intenso  
independientemente del certificado de  
≥50,000 Ciclos Martindale

#### Inflamabilidad

EN 1021 - 1 (cigarillo)  
EN 1021 - 2 (cerilla)  
BS 7176 Low Hazard  
BS 5852 Ignition Source 5  
BS 7176 Medium Hazard  
NF D 60-013  
ÖNORM B 3825 & A 3800-1  
(con CMHR 58 kg/m<sup>3</sup> de espuma)  
UNI 9175 Classe 1 IM  
BS 476 Part 7 Class 1 (Adhered)  
EN 13501-1 Adhered Class B, s1 ,d0  
BS 5867-2: Type B Curtains & Drapes  
IMO FTP Code (Part 8)  
The Furniture and Furnishing (Fire Safety)  
Regulations 1988 (UK doméstico cigarillo  
y cerilla)  
*Note: El rendimiento de la inflamabilidad  
depende de los componentes usados.  
Nuestros certificados muestran qué  
substratos se han usado en nuestros tests.  
Para tests compuestos nuestros clientes  
deben asegurar si sus muebles cumplen la  
normativa al uso.*

#### Solidez a la luz

4-5 (ISO 105 - B02)

#### Solidez al rozamiento

Húmedo: 3, Seco: 4 (ISO 105 - X12)

#### Acústico Propiedades

Acústicamente transparente. Gráficos  
disponibles bajo petición

#### Limpieza

Uso aspirador regularmente. Limpiar con  
un trapo usando jabón y agua o producto  
limpieza para tapicerías. Para una limpieza  
más profunda usen vapor o limpieza en  
seco profesional. Los detalles completos  
se encuentran en nuestra guía de limpieza  
y desinfección.

\*Los Test de Abrasión producen unos resultados muy variables incluso con la misma muestra. El certificado de ≥50,000 ciclos Martindale está disponible en nuestra web o se puede pedir al Departamento Comercial. Internamente certificamos este producto >35,000 ciclos, que pensamos que es lo más realista posible en este caso, con una repetición de resultados tan dispares. Tengan en cuenta que el Test de Abrasión solo no es un indicador fiable sobre el desgaste de un tejido. De hecho, estamos tan convencidos en la durabilidad de nuestros tejidos, que ofrecemos una garantía de 10 años (detalles completos disponibles). Tenga en cuenta que el rendimiento de la costura depende de la construcción de la costura, además de la aguja y del tipo de rosca. Le recomendamos que se aconsejen para coser la costura. Las variaciones de lote a lote en la sombra se puede producir dentro de tolerancias comerciales. Nos reservamos el derecho a efectuar modificaciones técnicas sin previo aviso. Los derechos sobre los diseños no registrados y los derechos de autor en todos los diseños son propiedad exclusiva de Camira Fabrics Limited.



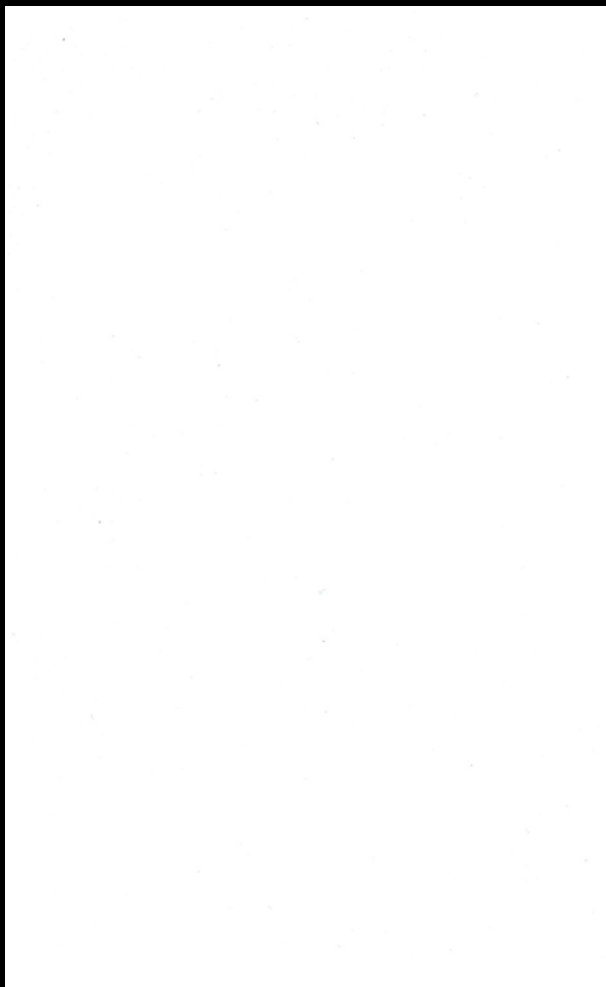
A unique durability  
Una durabilidad única

grupa / group B

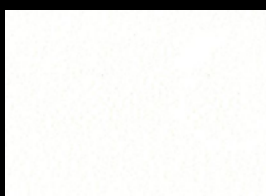
---

# Stamskin

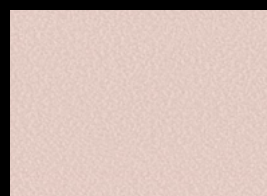
Top



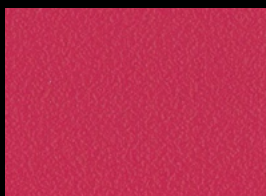
F4340-10120



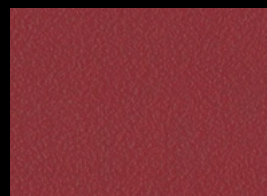
F4340-5029



F4340-20293



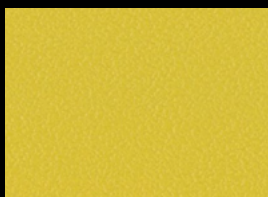
F4340-20287



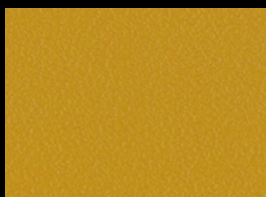
F4340-07479



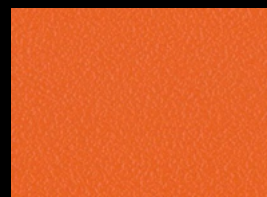
F4340-20283



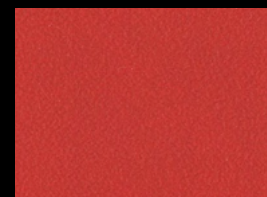
F4340-20299



F4340-20281



F4340-20280



F4340-07478



F4340-20290



F4340-10295



F4340-20294



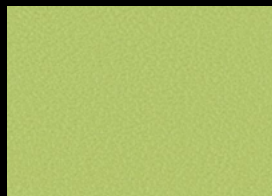
F4340-20289



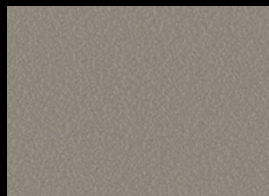
F4340-20288



F4340-20295



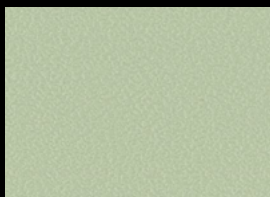
F4340-20300



F4340-20237



F4340-20284



F4340-20291



F4340-20253



F4340-20241



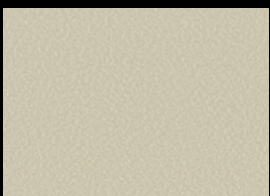
F4340-20282



F4340-20296



F4340-20285



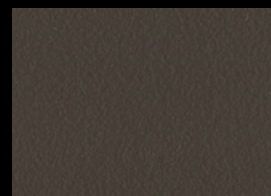
F4340-20279



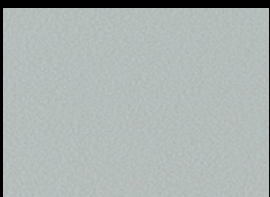
F4340-20286



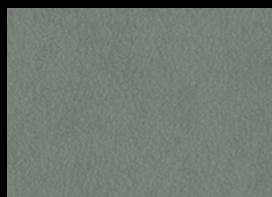
F4340-20278



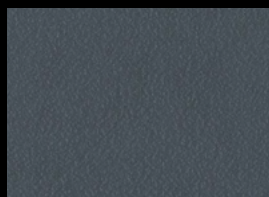
F4340-20129



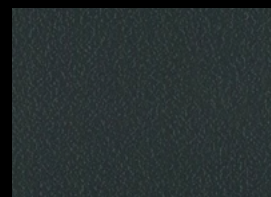
F4340-20161



F4340-07432



F4340-07445



F4340-00002

# Stamskin

## Top

	■ <b>Technical properties</b> - Propiedades técnicas	<b>Standards</b> - Normas
Description - Descripción	Multi-layer composite - Composite multi capas	
Base cloth - Soporte	Polyamide-jersey - Poliamida-jersey	
Width - Ancho	Approx. 140 cm ● 55.1 in.	
Weight - Peso	780 g/m <sup>2</sup> ● 23 oz/sq.yd	EN ISO 2286-2
Thickness - Espesor	1.0 - 1.2 mm ● 1,000 - 1,200 microns	ISO 5084
■ <b>Physical properties</b> - Propiedades físicas		
Elongation under load 125 N/5 cm Alargamiento bajo carga 125 N/5 cm	> 35% / > 55% (warp/weft) - (urdimbre/trama)	EN ISO 1421
Tensile strength - Resistencia a la tracción	> 440 N/5 cm / > 280 N/5 cm (warp/weft) - (urdimbre/trama)	EN ISO 1421
Tear strength - Resistencia al desgarro	> 25 N / > 15 N > 120,000 cycles (warp/weft) - (urdimbre/trama)	EN ISO 13937/1
Abrasion resistance (norms, cycles) Resistencia a la abrasión (normas, ciclos)	> 120,000	EN ISO 5470-2 Martindale
Flexing resistance (no damage, cycles) Resistencia a los pliegues (ciclos sin daños)	400,000	EN ISO 7854
Light stability - Estabilidad a la luz	GS=4 at 700 h - GS=4 a 700 h	ASTMG154: UVA340
Mold resistance - Resistencia al moho	Degree 0, excellent - Grado 0, excelente	EN ISO 846-A
Extreme working temperatures Temperaturas extremas de uso	-20°C / +70°C ● -4°F / 158°F	
■ <b>Reaction to fire</b> - Reacción al fuego		
Switzerland - Suiza	5.3	SN 198898 - VKF/AEAI
Italy - Italia	Class 2 - Clase 2	UNI 9177/87
Germany - Alemania	Class F1	DIN 53438-3
France - Francia	M2 F4	NFP 92.507 NFP 16-101-102
United Kingdom - Reino Unido	Pass - Conforme	BS 5852 Source 5 2006
United States - Estados Unidos	Pass - Conforme Class 1	CALTB 117-2013 NFPA 260
Australia - Australia	Pass - Conforme Group 2	AS / NZS 1530-3 AS / NZS 3837
Test cigarette / match - Test cigarrillo / cerilla	No fire - Sin ignición	EN 1021.1 - 1021.2
Marine test - Test marino	Pass - Conforme	IMO MSC.307 (88) (2010 FTP Code) Annex 1 part 8
Aeronautical test - Test aeronáutico	Pass - Conforme	FAR/JAR 25-853/855
■ <b>Management systems</b> - Sistemas de gestión		
Quality - Calidad		ISO 9001
Environment - Medio ambiente		ISO 14001
■ <b>Certifications, labels, warranty</b> - Certificaciones, labels, garantía		

Smart Coating  
Technology



Swiss  
made

5-year warranty  
5 años de garantía



<sup>1</sup> "+=0" logo: summarises the Serge Ferrari Group's commitment to CSR, to align economic performance and positive impact. Find out about our concrete actions in our CSR report.

<sup>1</sup> Logotipo "+=0": resume el compromiso del Grupo Serge Ferrari con la RSC, para alinear los resultados económicos y el impacto positivo. Conozca nuestras acciones concretas en nuestro informe de RSC.

Quoted technical characteristics are average values with a +/- 5% tolerance. Our products are subject to improvements resulting from technical developments and we reserve the right to modify their characteristics at any time. The purchaser of our products is responsible for checking the above data.

Las características técnicas indicadas son valores medios con una tolerancia de +/- 5%. Nuestros productos están sujetos a evolución según los progresos técnicos, reservándonos el derecho de modificar las características en todo momento. Es responsabilidad del comprador de nuestros productos comprobar la validez de los datos anteriores.

# Blazer

---

## camira

grupa / group C

---





**Dunhurst**  
CUZ58



**Eynesbury**  
CUZ2W



**Wesley**  
CUZ82



**Goldsmith**  
CUZ39



**Edge Hill**  
CUZ90



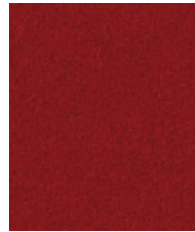
**Stanford**  
CUZ2R



**Barlborough**  
CUZ3D



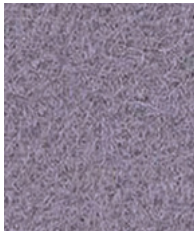
**Oriel**  
CUZ18



**Wellington**  
CUZ13



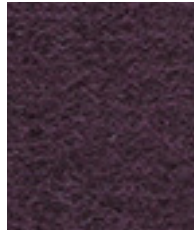
**Handcross**  
CUZ63



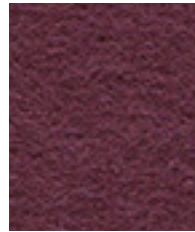
**Sheffield**  
CUZ1T



**Scottsdale**  
CUZ3E



**Holyoke**  
CUZ2T



**Barnard**  
CUZ2S



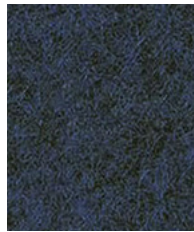
**Magdalene**  
CUZ21



**Marymount**  
CUZ3C



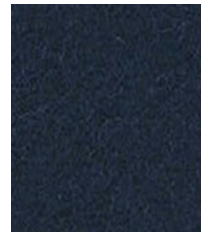
**Manchester**  
CUZ1V



**Newcastle**  
CUZ1W



**Oxford**  
CUZ09



**Edinburgh**  
CUZ1Y



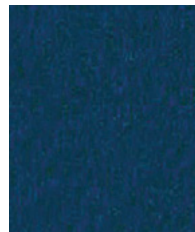
**Woodcroft**  
CUZ2Z



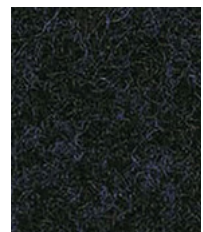
**Aston**  
CUZ02



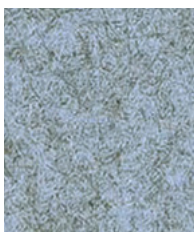
**Vassar**  
CUZ2U



**Knightsbridge**  
CUZ26



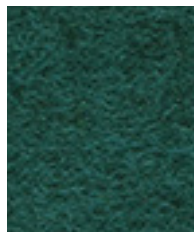
**Glenalmond**  
CUZ62



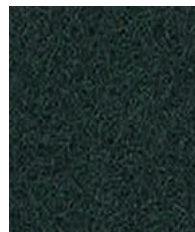
**Plymouth**  
CUZ1R



**Latymer**  
CUZ33



**Abertay**  
CUZ3B



**Hull**  
CUZ1P



**Winchester**  
CUZ12

Photographic fabric scans are not colour accurate. Always request actual fabric samples before ordering.



**Newport**  
CUZ1L



**Montcrest**  
CUZ3A



**Tyndale**  
CUZ2Y



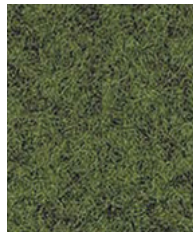
**Penola**  
CUZ2X



**Bryanston**  
CUZ53



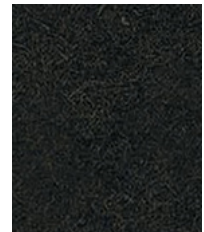
**Ulster**  
CUZ1F



**Camphill**  
CUZ1K



**Cardiff**  
CUZ1N



**Glasgow**  
CUZ1M



**Dartmouth**  
CUZ2Q



**Fairfield**  
CUZ47



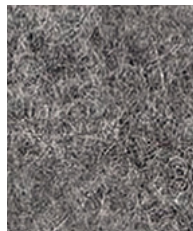
**St Andrews**  
CUZ86



**Trevelyan**  
CUZ31



**Silverdale**  
CUZ28



**Surrey**  
CUZ1E



**Aberlour**  
CUZ1J



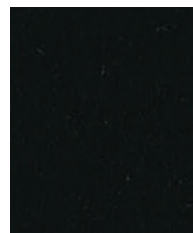
**Silcoates**  
CUZ30



**Bromsgrove**  
CUZ35



**Kingsmead**  
CUZ67



**Napier**  
CUZ08





Task seating



Soft seating



Panels

Cigarette  
& Match

Acoustic



Environmental



Year guarantee

With Treatment



Curtains



Medium Hazard

Blazer is a classic pure new wool upholstery fabric with a billiard cloth felted finish. It is made from premium New Zealand lambswool, where responsible farming provides the highest quality raw material which is soft, clean and bright, which is ideal for spinning, weaving and dyeing. The colour palette is an exciting mix of solids and mélanges across the full colour spectrum, creating a versatile fabric suitable for wide-ranging furniture applications.



## Technical information

UK	D	F	ES
<b>Industry Application</b> Contract, Residential	<b>Einsatzbereich</b> Büro & Objekt, Wohnen	<b>Application industrielle</b> Contract, Residential	<b>Aplicación Industrial</b> Contract, Residential
<b>Composition</b> 100% Virgin Wool	<b>Zusammensetzung</b> 100% Schurwolle	<b>Composition</b> 100% Laine Vierge	<b>Composición</b> 100% Lana Virgen
<b>Environment</b> Certified to Indoor Advantage™ Gold Rapidly renewable and compostable Non metallic dyestuffs	<b>Umweltfreundlich</b> Nach Zertifikat Indoor Advantage™ Gold Schnell erneuerbar und kompostierbar Nicht schwermetallhaltige Farbstoffe	<b>Écologique</b> Certifié à Indoor Advantage™ Gold Rapide renouvelable et compostable Teintures non métalliques	<b>Ambiental</b> Certificado de Indoor Advantage™ Gold Rapidamente renovable y compostable Tintes no metálicos
<b>Width</b> 140 cm minimum	<b>Breite</b> 140 cm nutzbare Breite	<b>Largeur</b> 140 cm minimum	<b>Ancho</b> 140 cm mínimo
<b>Weight</b> 460 g/m <sup>2</sup> ±5% (644 g/lin.m ±5%)	<b>Gewicht</b> 460 g/m <sup>2</sup> ±5% (644 g/ld.m ±5%)	<b>Poids</b> 460 g/m <sup>2</sup> ±5% (644 g/m.l ±5%)	<b>Peso</b> 460 g/m <sup>2</sup> ±5% (644 g/lin.m ±5%)
<b>Abrasion Resistance*</b> Heavy duty / 10 year guarantee. Independently certified to ≥50,000 Martindale cycles	<b>Scheuerfestigkeit*</b> Schwerer Objektsatz / 10 Jahre Garantie Extern zertifiziert mit ≥50,000 Scheuertouren Martindale	<b>Résistance à l'abrasion*</b> Usage intense / garantie 10 ans. Certificat indépendant ≥50,000 cycles Martindale	<b>Resistencia a la abrasión*</b> Garantía de 10 años con uso intenso independientemente del certificado de ≥50,000 Ciclos Martindale
<b>Flammability</b> EN 1021 - 1 (cigarette) EN 1021 - 2 (match) BS 7176 Low Hazard NF D 60-013 ÖNORM B 3825 & A 3800-1 (over CMHR 58kg/m <sup>3</sup> Foam) UNI 9175 Classe 1 IM BS 476 Part 7 Class 1 (Adhered) EN 13501-1 Adhered Class D, s1, d0 IMO FTP Code (Part 8) The Furniture and Furnishing (Fire Safety) Regulations 1988 (UK domestic cigarette and match) <b>Optional: Please specify when ordering:</b> BS 5852 Ignition Source 5 when FR treated BS 7176 Medium Hazard when FR treated BS 476 Part 6 Class 0 when FR treated (Adhered) EN 13501-1 Adhered Class B, s1, d0 when FR treated EN 13501-1 Un-adhered Class D, s2, d0 when FR treated BS 5867-2: Type B Curtains & Drapes when FR treated <i>Note: Flammability performance is dependent on components used. Our certificates show what substrates have been used in our tests. For composite tests customers must ensure their complete furniture meets the necessary standards.</i>	<b>Feuersicherung</b> EN 1021 - 1 (Zigarettentest) EN 1021 - 2 (Sreichholztest) BS 7176 Low Hazard NF D 60-013 ÖNORM B 3825 & A 3800-1 (mit CMHR 58kg/m <sup>3</sup> Schaum) UNI 9175 Classe 1 IM BS 476 Part 7 Class 1 (Adhered) EN 13501-1 Adhered Class D, s1, d0 IMO FTP Code (Part 8) The Furniture and Furnishing (Fire Safety) Regulations 1988 (UK Wohnmöbel Zigarettentest und Streichholztest) <b>Bitte bei Auftragserteilung angeben:</b> BS 5852 Ignition Source 5 wenn mit FR ausgerüstet BS 7176 Medium Hazard wenn mit FR ausgerüstet BS 476 Part 6 Class 0 wenn mit FR ausgerüstet (Adhered) EN 13501-1 Adhered Class B, s1, d0 wenn mit FR ausgerüstet EN 13501-1 Un-adhered Class D, s2, d0 wenn mit FR ausgerüstet BS 5867-2: Type B Curtains & Drapes wenn mit FR ausgerüstet <i>Bemerkung: Die Schwerentflammbarkeit hängt von den verwendeten Komponenten ab. Unsere Zertifikate zeigen auf, welche Substrate bei den Tests verwendet wurden. Bei Verbundtests muss sichergestellt sein, daß das komplette Möbel den entsprechenden Standards entspricht.</i>	<b>Flammabilité</b> EN 1021 - 1 (cigarette) EN 1021 - 2 (allumette) BS 7176 Low Hazard NF D 60-013 ÖNORM B 3825 & A 3800-1 (avec CMHR 58kg/m <sup>3</sup> Mousse) UNI 9175 Classe 1 IM BS 476 Part 7 Class 1 (Adhered) EN 13501-1 Adhered Class D, s1, d0 IMO FTP Code (Part 8) The Furniture and Furnishing (Fire Safety) Regulations 1988 (UK domicile cigarette et allumette) <b>Prière de le mentionner lors de la commande:</b> BS 5852 Ignition Source 5 si traitement FR BS 7176 Medium Hazard si traitement FR BS 476 Part 6 Class 0 si traitement FR (Adhered) EN 13501-1 Adhered Class B, s1, d0 si traitement FR EN 13501-1 Un-adhered Class D, s2, d0 si traitement FR BS 5867-2: Type B Curtains & Drapes si traitement FR <i>Note: La performance de flammabilité dépend des composantes utilisées. Nos certificats indiquent les substrats utilisés dans nos tests. Pour les tests composites, les clients doivent s'assurer que leurs meubles complets satisfont aux normes nécessaires.</i>	<b>Inflamabilidad</b> EN 1021 - 1 (cigarrillo) EN 1021 - 2 (cerilla) BS 7176 Low Hazard NF D 60-013 ÖNORM B 3825 & A 3800-1 (sobre 58kg/m <sup>3</sup> Foam CMHR) UNI 9175 Classe 1 IM BS 476 Part 7 Class 1 (Adhered) EN 13501-1 Adhered Class D, s1, d0 IMO FTP Code (Part 8) The Furniture and Furnishing (Fire Safety) Regulations 1988 (UK doméstico cigarillo y cerilla) <b>Por favor especificar cuando se requiere en el pedido:</b> BS 5852 Ignition Source 5 estando con tratamiento FR BS 7176 Medium Hazard estando con tratamiento FR BS 476 Part 6 Class 0 estando con tratamiento FR (Adhered) EN 13501-1 Adhered Class B, s1, d0 estando con tratamiento FR EN 13501-1 Un-adhered Class D, s2, d0 estando con tratamiento FR BS 5867-2: Type B Curtains & Drapes estando con tratamiento FR <i>Nota: El rendimiento de la inflamabilidad depende de los componentes usados. Nuestros certificados muestran que substratos se han usado en nuestros tests. Para tests compuestos nuestros clientes deben asegurar si sus muebles cumplen la normativa al uso.</i>
<b>Light Fastness</b> 5 (ISO 105 - B02)	<b>Lichtechtheit</b> 5 (ISO 105 - B02)	<b>Solidité à la lumière</b> 5 (ISO 105 - B02)	<b>Solidez a la luz</b> 5 (ISO 105 - B02)
<b>Fastness to Rubbing</b> Wet: 4, Dry: 4 (ISO 105 - X12)	<b>Reibechtheit</b> Nass: 4, Trocken: 4 (ISO 105 - X12)	<b>Solidité au Frottement</b> Mouillé: 4, Sec: 4 (ISO 105 - X12)	<b>Solidez al rozamiento</b> Húmedo: 4, Seco: 4 (ISO 105 - X12)
<b>Acoustic Properties</b> Acoustically transparent. Acoustic graphs available upon request	<b>Akustische Eigenschaften</b> Akustisch durchlässig. Akustische Messwerte auf Anfrage	<b>Propriétés Acoustiques</b> Acoustiquement transparent. Graphiques acoustiques disponibles sur demande	<b>Acústico Propiedades</b> Acústicamente transparente. Gráficos disponibles bajo petición
<b>Cleaning</b> Vacuum regularly. Wipe with a damp cloth using a proprietary upholstery shampoo/ soap. For deeper cleaning use steam or professionally dry clean. Full details can be found in our cleaning and disinfection guide.	<b>Reinigung</b> Regelmäßig absaugen. Mit einem feuchten Tuch abwischen oder mit einem geeigneten Polstershampoo behandeln. Für eine Grundreinigung bitte Dampf oder professionelle Trockenreinigung verwenden. Weitere Informationen finden Sie in unserem Leitfaden zur Reinigung und Pflege.	<b>Nettoyage</b> Passez l'aspirateur régulièrement. Essuyez avec un chiffon humide en utilisant un shampooing/savon pour tissus d'ameublement exclusif. Pour un nettoyage en profondeur, utilisez la vapeur ou un nettoyage à sec professionnel. Vous trouverez tous les détails dans notre guide de nettoyage et de désinfection.	<b>Limpeza</b> Use aspirador regularmente. Limpiar con un trapo usando jabón y agua o producto limpieza para tapicerías. Para una limpieza más profunda usen vapor o limpieza en seco profesional. Los detalles completos se encuentran en nuestra guía de limpieza y desinfección.
<small>*Abrasion testing produces a wide variability of results even from the same test sample. The independent certificate of ≥50,000 cycles is available on our website or from our customer service team. Internally we specify this product at &gt;20,000 cycles which we believe is realistic for repeatability of testing. Please be aware that abrasion testing alone is not a reliable indicator of the actual wear performance of fabrics. We're so confident in the durability of our products that we provide a robust 10 year guarantee (full details available).  Please note that seam performance is dependent on seam construction and needle and thread type. We recommend that appropriate sewing advice be taken.  Batch to batch variations in shade may occur within commercial tolerances. We reserve the right to alter technical specifications without notice. The Unregistered Design Rights and the Copyright in all designs are the exclusive property of Camira Fabrics Limited.</small>	<small>*Die Scheuerfestigkeitsprüfung ergibt selbst bei gleichen Testmustern stark abweichende Ergebnisse. Das Zertifikat eines unabhängigen Prüfinstitutes über ≥50,000 Scheuertouren erhalten Sie von unserem Vertriebsinnendienst oder auf unserer Webseite. Intern spezifizieren wir dieses Produkt mit &gt;20,000 Scheuertouren, die in der Serienfertigung als realistisch angenommen werden. Bitte nehmen Sie zur Kenntnis, dass die Scheuerfestigkeitsprüfung allein keine Aussagekraft über die Langlebigkeit eines Bezugstoffes hat. Wir sind von der Langlebigkeit unserer Produkte überzeugt und bieten daher 10 Jahre Garantie (Details auf Anfrage).  Eine optimale Nahtausreissfestigkeit hängt von der Nahtfahne, der verwendeten Nadel und dem Näh-Garn ab. Wir empfehlen daher Nähversuche durchzuführen.  Handelsübliche Farbabweichungen können auftreten und berechtigen nicht zur Reklamation. Wir behalten uns die Änderung technischer Spezifikationen vor. Die registrierten und nicht registrierten Urheberrechte der Dessinierungen sind ausschliessliches Eigentum der Camira Fabrics Limited.</small>	<small>*Les tests de résistance à l'abrasion proposent une large variété de résultat final, parfois sur le même échantillon de tissu. Le certificat indépendant de ≥50,000 cycles est disponible sur notre site internet; vous pouvez également contacter notre Service Clients. Nous validons ce produit – en interne – à &gt;20,000 cycles; ce qui est, d'après nous, plus réaliste dans le but d'obtenir une continuité égale des résultats de tests. Merci de noter que l'abrasion seule ne constitue pas un indicateur de confiance dans la performance du tissu à long terme. Nous avons une confiance absolue en nos produits et leur durabilité, c'est pour cela que nous vous offrons une garantie robuste de 10 ans.  Veillez noter que la performance du joint dépend de sa construction ainsi que de l'aiguille et du type de fil utilisés.  Une variation de couleurs peut provenir (commerciallement tolérable). Nous réservons le droit de changer les spécifications techniques sans préavis. Les Droits de Conception non-enregistrés et les droits d'auteur de tous les motifs sont la propriété exclusive de Camira Fabrics Limited.</small>	<small>*Los Test de Abrasión producen unos resultados muy variables incluso con la misma muestra. El certificado de ≥50,000 ciclos Martindale está disponible en nuestra web o se puede pedir al Departamento Comercial. Internamente certificamos este producto &gt;20,000 ciclos, que pensamos que es lo más realista posible en este caso, con una repetición de resultados tan dispares. Tengan en cuenta que el Test de Abrasión solo no es un indicador fiable sobre el desgaste de un tejido. De hecho, estamos tan convencidos en la durabilidad de nuestros tejidos, que ofrecemos una garantía de 10 años (detalles completos disponibles).  Tenga en cuenta que el rendimiento de la costura depende de la construcción de la costura, además de la aguja y del tipo de roscas. Le recomendamos que se aconsejen para coser la costura.  Las variaciones de lote a lote en la sombra se puede producir dentro de tolerancias comerciales. Nos reservamos el derecho a efectuar modificaciones técnicas sin previo aviso. Los derechos sobre los diseños no registrados y los derechos de autor en todos los diseños nos propiedad exclusiva de Camira Fabrics Limited.</small>